



MACPRESSE EUROPA

WWW.MACPRESSE.COM

SERIES MAC/2, MULTI-MATERIAL BALERS FOR RECYCLABLES



MUNICIPAL SOLID
WASTE PROCESSING



RECYCLING SECONDARY
RAW MATERIAL



RENEWABLE ENERGY
AND BIOMASS



PAPER INDUSTRY

GENERAL DESCRIPTION

MAC 110/2

HYDRAULIC UNIT EQUIPPED WITH
SOUNDPROOFING AND FORCED VENTILATION

3D DESIGN, SYNERGY OF
SIMPLICITY AND STRENGTH

EXTRUSION PRESSURE CHANNEL
CONTROLLED COMPLETELY BY
PROPORTIONAL VALVES FOR GREATER
BALE DENSITY
IN WHATEVER CONDITION

REMOTE CONTROL PANEL

LARGER DOORS FOR BETTER
CLEANING AND MAINTENANCE

IMPROVED DESIGN WITH THICKER SIDES

CONTROL CHAMBER OF THE EXTRUSION CHANNEL
ALLOWING A 40 TON AXIAL THRUST WITHOUT RADIAL
LOADS ON THE SEALS

BALE EXTRUSION
CHANNEL

BOLTED HARDOX
PLATES

MATERIALS PROCESSED AND PRODUCTION

MAC 110/2

EUROPE

PET 12 TON/H

OCC 22 TON/H

MIXED PAPER 35 TON/H

RDF 40 TON/H

USA

PET 13.2 TON (US)/H

OCC 24.2 TON (US)/H

MIXED PAPER 38.5 TON (US)/H

RDF 44 TON (US)/H



PET

INFEED DENSITY



EUROPE

25/30 kg/m³

USA

1.56/1.87 lb/ft³



OCC



70/80 kg/m³

4.37/4.99 lb/ft³



MIXED PAPER

INFEED DENSITY



EUROPE

100/120 kg/m³

USA

6.24/7.49 lb/ft³



RDF



150/200 kg/m³

9.36/12.48 lb/ft³

MODEL
MAC 110/2



2X75 HP





MOTORS POWER

CUTTING AND THRUST POWER

170 ton / 374 800 LB

NO LOAD PERFORMANCE

Note: Performance rates, bale weights and bale densities are subject to moisture content, material pre-bale densities, feed rates and other variables in baling.

EUROPE	2.9 m ³	696 m ³ /h	4	15 sec
USA	102 ft ³	24 580 ft ³ /h	4	15 sec
				
	LOADING VOLUME	VOLUMETRIC PRODUCTION	CYCLES PER MINUTE	CYCLE TIME

GENERAL SPECIFICATIONS

	EUROPE (MM)	USA
OVERALL LENGTH	14.265	46'10"
MAXIMUM WIDTH	5 945 (at tier station)	19'6"
OVERALL HEIGHT	4 055 (at flange hopper)	13'4"
FEED OPENING	2 000 x 1 020	79" x 40"
BALE DIMENSIONS	1100 x 1100 (dimens. WxH)	43" 1/3 x 43" 1/3
BALER WEIGHT WITHOUT FLUFFER	39 100 Kg (less oil)	86 200 lbs
BALER WEIGHT WITH FLUFFER	44 100 Kg (less oil)	97 225 lbs
NUMBERS OF WIRES	5	5

MODEL

MAC 110/2

EUROPE

PET 12 TON/H
OCC 22TON/H
MIXED PAPER 35 TON/H
RDF 40 TON/H

USA

PET 13.2 TON (US)/H
OCC 24.2 TON (US)/H
MIXED PAPER 38.5 TON (US)/H
RDF 44 TON (US)/H

TECHNICAL DATA

MAIN MOTORS POWER

2x55 kw

MAIN HYDRAULIC PUMPS

Two "REXROTH" variable flow pump with full regenerative circuit

PUMP FLOW CAPACITY

728 l/min
192 GPM

OPERATING PRESSURE

220-280 Bar (3200-4000 PSI)
315 Bar (4500 PSI)

MAIN CYLINDER

260 mm - 10" 1/4

RAM FORCE

170 000 kg
374 800 lbs

RAM FORCE PRESSURE

14 kg/cm²
200 Psi

OIL RESERVOIR CAPACITY

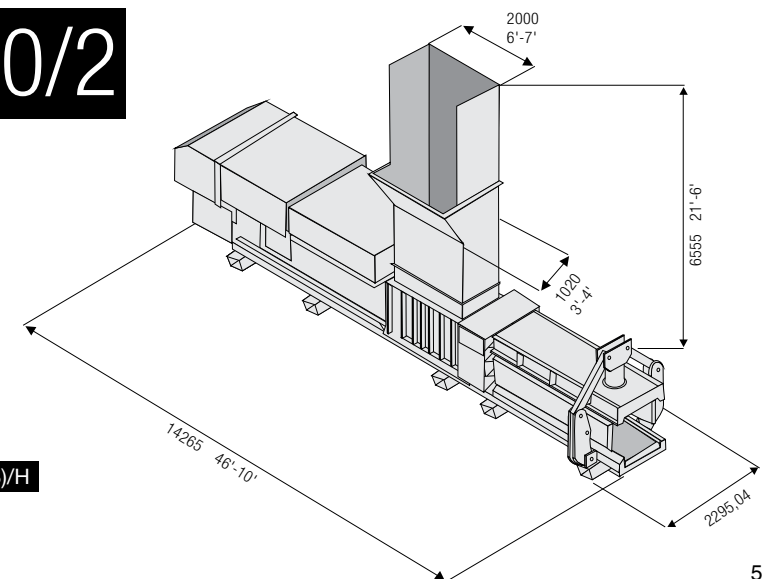
2500 lt
660 US Gal

COOLING SYSTEM

Thermostatically controlled air to oil heat exchanger

OPERATING CONTROL

Siemens S7 300 programmable controller



ADVANTAGES OF SERIES/2

COMPARISON WITH PREVIOUS SERIES

RAM FORCE

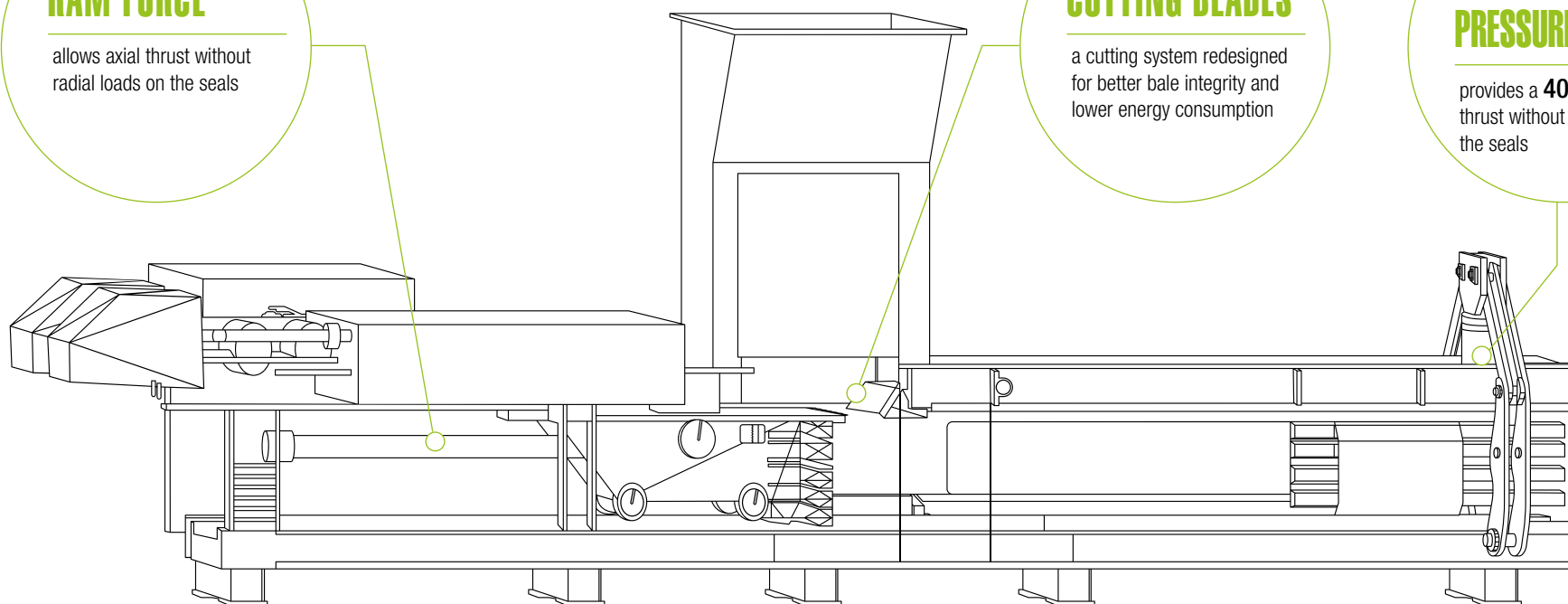
allows axial thrust without radial loads on the seals

CUTTING BLADES

a cutting system redesigned for better bale integrity and lower energy consumption

COUNTER-PRESSURE CYLINDER

provides a **40 Ton** axial thrust without radial loads on the seals



+30%

ENERGY EFFICIENCY

IE3 high efficiency motors.

+30%

SERVICE LIFE

main cylinder mounted centrally, seals are the latest SKF generation, spherical mounting to reduce radial loads on the stem.

+10%

ROBUSTNESS

reinforced structure, completely redesigned using high resistant steel.

+30%

ACCESSIBILITY

compacting chamber equipped with 2 larger size access doors.

+45%

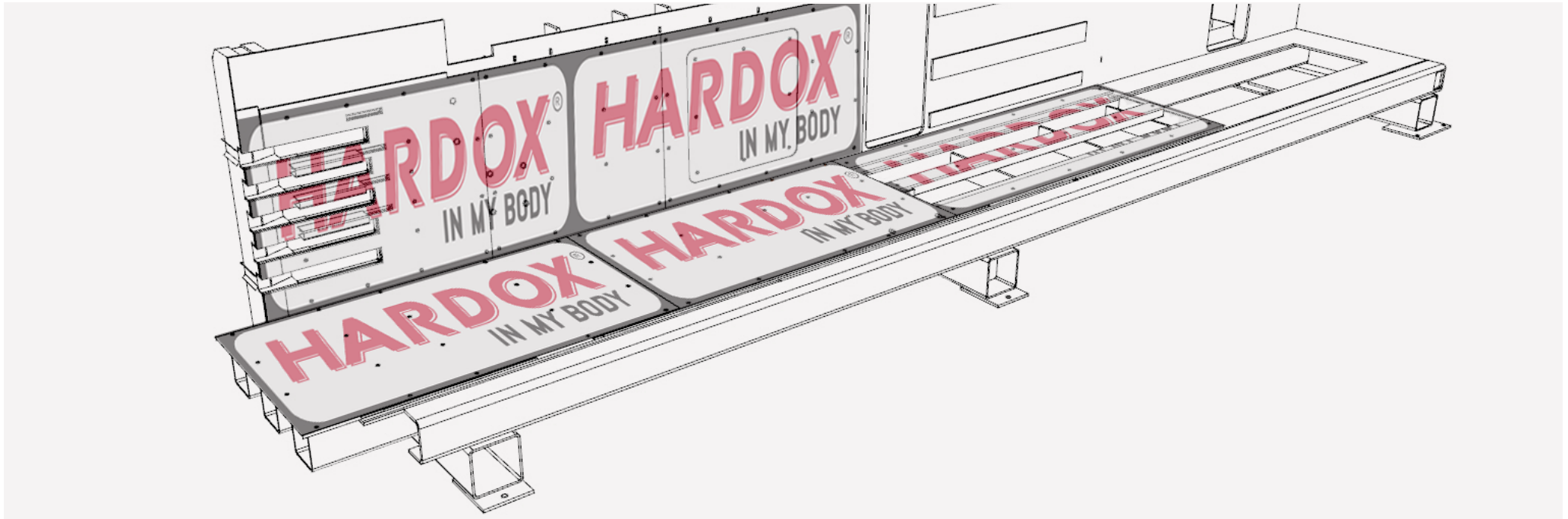
XL CHANNEL

longer extrusion channel **+1.5 m (59")** for better bale density.

+12%

HOPPER DIMENSIONS

larger load hopper dimensions



WEAR RESISTANT

CORE VALUE



LONG LASTING



ROBUSTNESS



EASY
MAINTENANCE

HARDOX STEEL LINERS



HARDOX STEEL LINERS REPLACEMENT

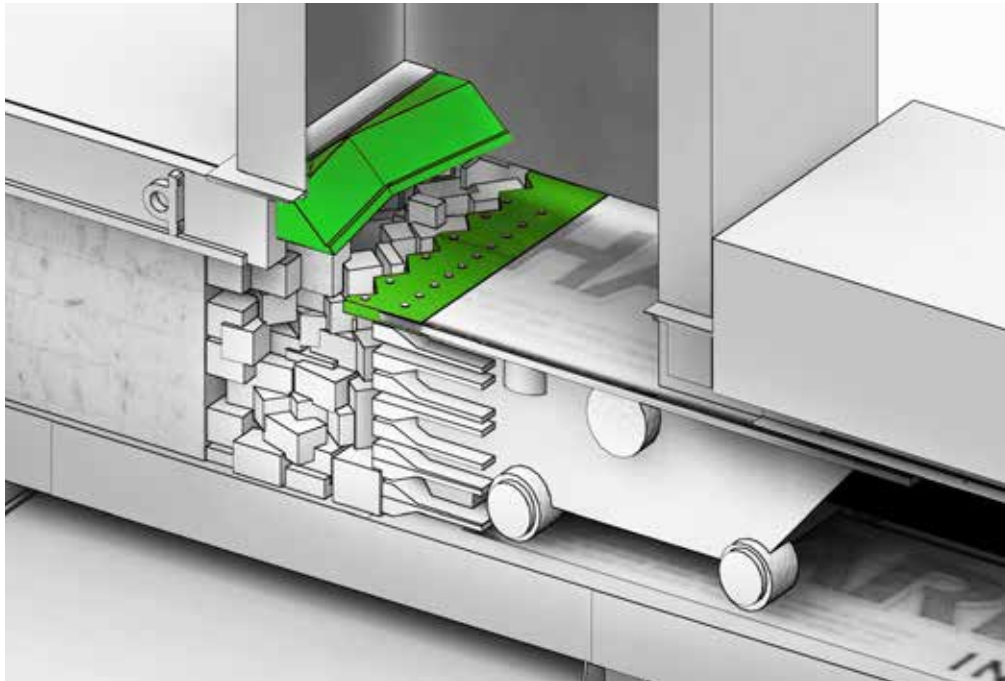
THIS WEAR RESISTANT SYSTEM PROTECTS THE BALER FROM ABRASION AND CORROSION.

Replaceable liners made of HARDOX wear-resistant steel alloy that extends working life of the equipment. The wear liners are bolted in the extrusion chamber and in the compaction box and can be easily replaced.

1. WEAR RESISTANT SYSTEM REDESIGNED TO REDUCE OPERATING COSTS
2. RESISTANCE TO WEAR AND CHEMICAL AGENTS
3. RAPID REPLACEMENT(PATENTED ATTACHMENT SYSTEM)
4. MINIMIZE BALER DOWNTIME

400%

LONGER LASTING
than normal steel

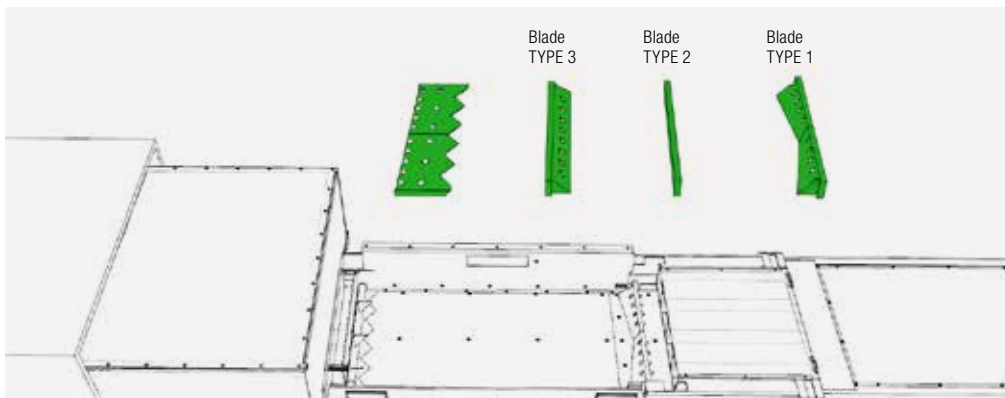


CUTTING SYSTEM

CORE VALUE

HIGH EFFICIENCY BLADE

Specific interchangeable tempered cutting blades based on the type of material to be baled.



ROBUSTNESS



FAST
INTERCHANGEABILITY



LOW ENERGY
CONSUMPTION

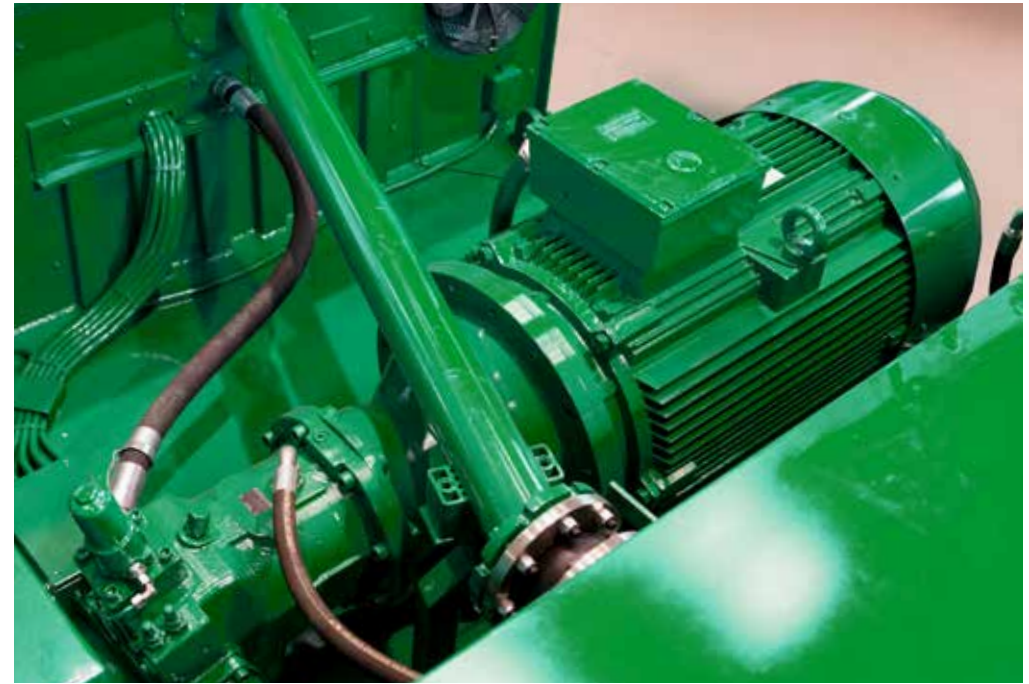


LONG LASTING

COUNTER-PRESSURE RELEASE SYSTEM



Hydraulic quick release circuit for fast zero-setting of counter pressure should a foreign object accidentally fall in the hopper.



HYDRAULICS

CORE VALUE



Rexroth
Bosch Group



HARSH
ENVIRONMENTS



LOW ENERGY
CONSUMPTION



EASY
MAINTENANCE

SMART SYSTEM ADAPTABLE TO MATERIAL

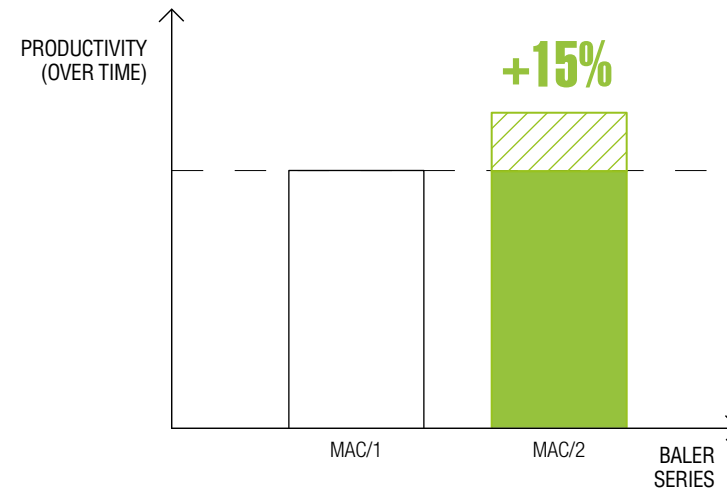
Pumps positioned outside of oil tank for a better performance and easier maintenance. The installation of variable flow pumps provides a better performance with reduced electrical consumption.

HIGH EFFICIENCY IE3 MOTORS ARE USED WITH AN ENERGY SAVINGS OF 30% COMPARED WITH TRADITIONAL MOTORS.

35%

**ENERGY
SAVINGS**

compared with traditional
motors



TYING UNIT

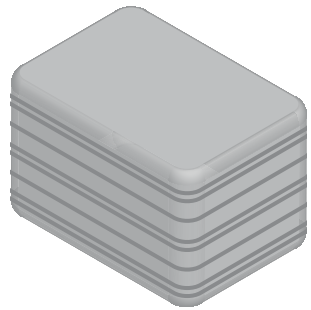
CORE VALUE

FLEXIBILITY OF USE AND OPTIMISATION OF COSTS

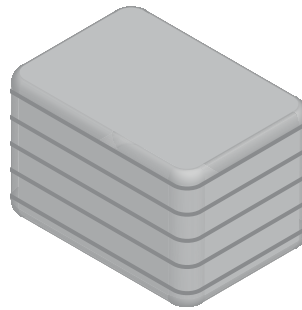
ELECTROMECHANICAL HORIZONTAL TYING SYSTEM DESIGNED FOR TYING BOTH PLASTIC AND STEEL WIRES

This system simplifies the cleaning process for the tying machine, guaranteeing greater safety for the operator. The maintenance and cleaning of the tying machine is carried out at floor level, operations on the steel wire are not required beneath the machine.

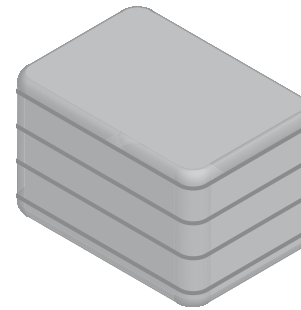
TYING METHOD



5+3 WIRES



5 WIRES



4 WIRES

+50%

TYING SPEED



ROBUSTNESS



RELIABILITY



FLEXIBILITY



EASY
MAINTENANCE



5 WIRES



STEEL WIRE REELS



TYING MACHINE MAINTENANCE



MOBILE TYING MACHINE (OPTIONAL)



PLASTIC WIRE



PLASTIC WIRE REELS



MAIN ELECTRIC PANEL CONTROL

ELECTRICAL COMPONENTS

CORE VALUE

CONNECTION OF ELECTRICAL COMPONENTS

Connections using SCART leads and electrical cables protected by rodent-proof and fire-resistant sheaths

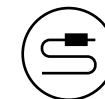


SHEATHS FOR ELECTRIC CABLES PROTECTION



SCART PLUGS

SIEMENS



HIGH CABLE
RESISTANCE



OPERATOR
SAFETY



EASY
MAINTENANCE

NEWLY REDESIGNED AND DEVELOPED MACHINE MANAGEMENT SYSTEM

MACPRESSE IN NUMBERS

1500+

BALERS
INSTALLED

200+

COLLABORATIONS
AROUND THE
WORLD

15+

PROPRIETARY
PATENTS

**WORLDWIDE
ASSISTANCE**

45+

COUNTRIES WITH
INSTALLED
BALERS

50+

COUNTRIES WITH
PARTNERS

50+

BALERS PER YEAR
PRODUCED

50+

YEARS IN THE
MARKET

40+

COUNTRIES WITH
SPARE PARTS
STORES

CONTACTS

Find out more on www.macpresse.com/mac2 or contact us:
e-mail info@macpresse.com
tel. +39 02 905 24 20

SOLUTION FEATURES

*Macpresse reserves the right to change specifications without notice.



HIGH DENSITY
BALES



IMPERMEABLE



EASILY
TRANSPORTABLE



OPTIMUM
STORAGE



SEA
TRANSPORT



ROAD
TRANSPORT



RAIL
TRANSPORT